



Withernsea



Primary School

ALL – Aspire and Love Learning

October 2015 Newsletter

Parent's Evenings

Parent's Evenings are to take place on Tuesday 20 October and Thursday 22 October 2015.

Please do come and meet your child's class teacher. Even if you are really happy that they have settled well and you feel they are doing fine, still please come.

We will be explaining and handing out the Milestone booklets (milestones have replaced levels in our school). Also we have Special Needs Support plans and Causing Concern plans to give to parents whose children are receiving additional support in some way.

The evenings are friendly and informal and we would love to see all our parents.

We usually get about 90% of parents attending, so we look forward to seeing you.

As usual there will be our parent questionnaire so we can get some general feedback and also some further feedback on specific ideas we have for improving our school. There will also be a variety of stalls in the North hall which may be of interest to parents.

Come and Play sessions

The Children's Centre are to bring toys, games etc. all suitable for pre-school children to the South hall every Tuesday from 8.45 - 10am. Drop the school children off and bring the little ones in for a free play session – all welcome, every week.

Special Educational Needs

We have purchased a diagnostic test for Special Needs called SNAP, (Special Needs Assessment Proformas). This is to ensure if we are concerned about a child we build up an accurate picture as to what their needs are. We will always phone parents to let them know our concerns, there is a parent booklet to complete and if the child is old enough a pupil booklet so we can build up a holistic picture of your child. We will discuss results and ways forward with parents after the booklets have been completed and we have some results.

Thank you to parents who have taken the time to complete these already.

Lost Property

Please, please please put names in your child's clothes and belongings so we can return lost items to them. Last summer we had four bin bags full of clothes in the North building, none of which had names in so we could not return them to children. As we get towards colder weather please also ensure names are in coats - often there will be several coats that are identical and children can take home one in a different size or in a better/worse condition than their own.

Also please name clearly your child's lunch box; this is so they don't eat the wrong lunch because they have picked up an identical box by accident and also if they leave it on the trolley we can give it to them to ensure it gets back home. Every Friday we ensure the packed lunch trolleys are emptied and washed down, ready to start a new week on Monday. We remove boxes left and try to ensure they are taken home to be washed.

New addresses, phone numbers etc.

Please keep us up-to-date with any new addresses or phone numbers, especially if you have updated your mobile or changed contracts and have a new number. It is important that we can get in touch with you if we need to. Any updated details should be given to Mrs Hollingsworth in the South office; thank you for your help with this. Also please let us know about numbers that no longer work and also if you change your emergency contacts - if you are unsure give our Home-School Liaison Officers a ring or pop in to the south office to check - thank you. Children get really upset if they feel ill and we are unable to contact anyone

Book Fair

Our annual Scholastic Book Fair will be held in the North hall after school commencing on Tuesday 20 October. Children and parents will be able to view, purchase books and various items of stationery. Depending on how many books have been sold, school can accrue commission to obtain books for school - please support this event.



The Book Fair will be open at the following times:-

Tuesday 20, and Thursday 22 (Open Evenings), from 3.30 pm – 6.00 pm and Wednesday 21 from 3.30 – 4.00 pm.

Healthy Schools Page

Site Regulations

To support Health and Safety and keeping children safe, parents are reminded the school is a no smoking site including the school drive, (this includes e cigarettes); can you also please remember that dogs, (except guide dogs), or other animals are not allowed on the school site – thank you for help with this.

Scooters and Bikes

We are happy for children to come to school on scooters and bikes. However they must be walked up the drive as we have had accidents in the past with other children being hurt. Therefore we have this rule for everyone's safety. Please can parents also not cycle or scooter as you are role models for the children. We have some children who are persistently not doing this. We will ask that they leave their scooter or bike at home or ask parents to come and collect the scooters/bikes from school. Please help us keep everyone safe.

Tuck Shop Menu



Years 1 and 2 receive fruit and vegetables as a snack and do not need to bring any money.

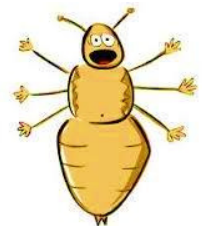
Year 3, 4, 5, and 6 may bring some money to shop and purchase a snack from the North hall kitchen at morning playtime – (see menu/prices further on in the newsletter), so parents can decide on an appropriate amount of money. Those year groups can also bring in fruit or a cereal bar from home and eat it in the hall in morning break – please keep it separate from the packed lunch boxes as children don't have access to these at morning break.

Headlice

Please can every one 'Once a week take a peek' - to try and eradicate this problem.

If you are not sure what you are looking for or how to check, Mrs Huteson/Mrs Heath or Ms Leech are happy to show you what to do. The Health Service does not have the resources to provide a 'nit nurse' and even if they did it still does not eradicate the problem as treatment is the responsibility of parents.

If school becomes aware of a child with headlice we will contact the parents to seek treatment. It is really important that parents do not do a one off treatment and think they have solved the problem as lotions tend to kill the lice but not always the eggs. It only takes one egg to get missed, hatch and off the whole cycle goes again. Headlice prolifically lay eggs. It is also important to check the whole family including adults and to be aware it is a community issue. Wherever children gather together e.g. football teams, dance groups, playing together outside etc. if they have head contact with each other headlice can travel. The problem does not go away at holiday times- please continue to check even when we are not at school.



Exam Results – Fantastic Results – Well Done Year 6 2015!

Last year's Year 6 are hopefully settling into the routines of the High School and getting off to a good start with their next chapter of their education. We hope they have settled in well and enjoying the benefits of brand new facilities.

Our Reading results were particularly successful with 86% of children reaching Level 4 and 48% reaching level 5. In maths, 85% of children reached level 4 and 29% reached. In writing 68% reached level 4 and 14% reached Level 5.

These were good results but the progress made by many children was outstanding.

Reading 93% made 2 levels progress, 57% made three levels progress and 3% made four levels progress.

Writing 95% made two levels progress, 20% made three levels progress.

Maths 90% made two levels progress and 33% made three levels progress from Key stage One.

It is a testament to the excellent teaching, supportive parents and the pupils themselves for their positive attitudes and the hard work and effort they put into their learning to achieve such fabulous results - well done!

Attendance

Our attendance has got off to a good start but we need to keep it going. A day's learning lost can't be regained. If your child has 95% it means they will have missed 9 days of school over the year. If they have 90% attendance they will have missed 19 days of learning across the year. Last year we had 85 children who missed that much learning and more. Please help us by making sure your child is here and achieving good and excellent attendance.

Congratulations to 5ML- Mr Lindgren's class, (**98.8%**) for very impressive attendance during the month of September.

Class	Percentage		Percentage
F2CG – Miss C Good	93.4%	3BH – Mrs C Bagnall / Mrs L Hilton	98.5%
F2SA –Mrs K Appleton	96.1%	4CC – Mr C Cundy	98.0%
F2SN – Mrs S Noble	95.4%	4FS – Miss F Seager	98.3%
1ES – Miss E Smith	95.5%	4CW – Mrs C Wright	98.0%
1CN – Mrs C Neale	96.1%	5ML – Mr M Lindgren	98.8%
1JT – Miss J Teall	97.0%	5SC – Mrs H Peachey	98.6%
2HT – Mrs H Todd	98.6%	5KB – Mrs K Banks	96.5%
2TH – Miss T Harrison	95.0%	6LH – Miss L Harrison	94.6%
3RE – Mrs R Egan	95.7%	6MP – Mr M Pawson	95.7%
3LF – Mrs L Feeney	96.7%	6RL – Mrs R Lindgren	94.8%

Fair School Funding

In addition to this newsletter you will receive a copy of the letter and petition to support Graham Stuart's Fair School Funding Campaign. We will be grateful for your help by getting family members, friends and neighbours to sign the petition? Please return forms to the school by no later than Friday 16 October - thank you.

Rock Challenge/Danceathon – non uniform day

The theme for next year's Rock Challenge is 'Great Britain'. On Thursday 15 October we will be holding a Danceathon in the school hall. For a £1 donation, the children will be able to come to school dressed in red white and blue; all proceeds raised will go towards next year's Rock Challenge.

Rock Challenge rehearsal schedule

Rehearsals are 3.20 – 4.30 pm in the North hall. You must attend your rehearsal!

Wednesday 7 October – NHS dance

Wednesday 14 October – Inventions dance & Sports dance

Wednesday 21 October – Music & Fashion dance







We are participating in 'Wear it Pink Day' on Friday 23 October. The children are invited to come to school in something pink with a £1 donation. All proceeds raised will be given to the Withernsea Wear it Pink Cancer Campaign.

Thank you for your support.



Withernsea Primary School – PE and Games Uniform

As we start the new school year I would like to take this opportunity to remind you of our school PE/games uniform requirements.

PE (Indoors)	Games (outdoors)
<p>Dark shorts(blue or black) Pale blue T shirt Black plimsolls (laced or velcro)</p>    <p>Dance and gymnastics are done in bare feet. Circuit sessions are done in plimsolls.</p>	<p><u>Warm weather:</u> Dark shorts(blue or black) Pale blue T Shirt Outdoor trainers.</p> <p><u>Cold weather:</u> Pale blue T Shirt Dark jogging bottoms/sweatshirt or dark tracksuit (blue or black) Outdoor trainers</p>   

Jewellery

In the interest of health and safety no jewellery can be worn for PE/Games.

Ear-rings must be removed unless a note is received from parents/carers to say otherwise. If a note is received tape will be used to cover the ear-rings to prevent them been caught on equipment.

Long hair must always be tied back for PE/Games to prevent accidents during activities.

Thank you for your co-operation with this matter.

Withernsea High Science Club

Booking are now been taken for the award winning Lab Rascals science and engineering clubs. All clubs are run by highly trained scientists from the University of Hull. These amazing clubs are suitable for children aged 7+ however younger children are welcome if accompanied by an adult. These clubs give children the opportunity to have fun experimenting hands on while learning and develop skills for life. This year the children will develop and designing their own experiments to receive the British science association crest award after the Christmas half term.

Each science clubs session costs £5 per child and booking is required.

Sessions take place at **Withernsea high school: Monday**

evenings 4:15-5:15pm

Week	Topic	Description
28th Sept	Polymers	The children will make jelly worms and slime.
5 th Oct	Volcano's	The children will make and erupt dry ice volcanos.
12 th Oct	Bridge building competition.	The children will design and build a 1metre long suspension bridge out of spaghetti that can hold a weight.
19 th Oct	Forensic Science	The children will do fingerprinting and foot print casting.

To book a place: **E:Katie@Labrascals.co.uk** or **Text: 07825285155** your child's name, age, location, dates & time your child would like to attend.

Dates for your diary

- Open Evening – Tuesday 20 October & Thursday 22 October -3.30 – 6.00 pm
- (The Scholastic Book Fair will be in the North hall from Tuesday 20 - Thursday 22 October)
- Rock Challenge Dancethon Thursday 15 October
- Wear it Pink Day – Friday 23 October



Christmas Fayre

We will be holding a Christmas Fayre on Thursday 10 December from 5.30 – 7.30 pm
(More details to follow)



Term Dates – 2015/2016

Autumn Term 2015

Close for half term – Friday 23 October

Re-open – Monday 2 November

Close – Friday 18 December at **2.20 pm**

Please note the school will be closed in the afternoon to F1 (pm) children on – Friday 18 December.

Spring Term 2016

Open – Tuesday 5 January

Close – Friday 12 February

Re-open – Monday 22 February

Close – Thursday 24 March at **2.20 pm**

Please note the school will be closed in the afternoon to F1 (pm) children on Thursday 24 March.

Summer Term 2016

Open - Tuesday 12 April

Close for May Day - Monday 2 May

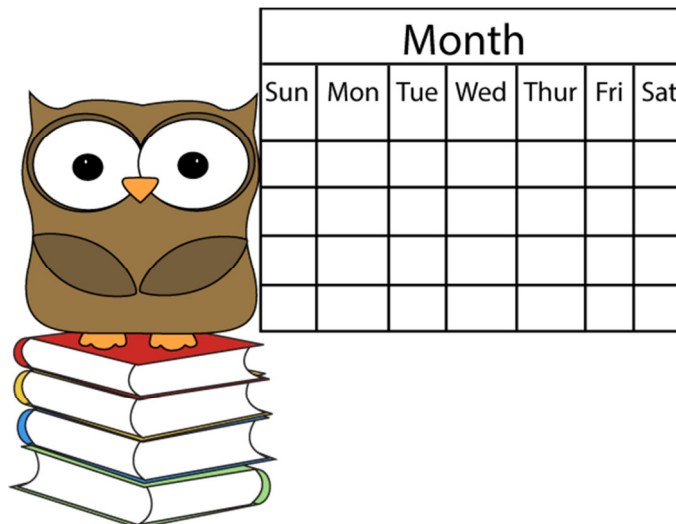
Close for half term - Friday 27 May

Re-open - Monday 6 June

Close - Friday 22 July at **2.20 pm**

Please note the school will be closed in the afternoon to F1 (pm) children on Friday 22 July.

SATS WEEK - week commencing 9 May 2016



Blogs

You can now follow our main blog updates via twitter. Just search for @wps_academy or Withernsea Primary. We will put children's work on our year group Blogs please look at what they have been doing and enjoy their work.

Main school blog -

<http://withernseaprimarblog.blogspot.com/>

Foundation stage blog –

<http://wpsfoundationblog.blogspot.com>

Year 1 blog - <http://wpsyearch1blog.blogspot.com/>

Year 2 blog - <http://wpsyearch2blog.blogspot.com/>

Year 3 blog - <http://wpsyearch3blog.blogspot.com/>

Year 4 blog - <http://wpsyearch4blog.blogspot.com/>

Year 5 blog - <http://wpsyearch5blog.blogspot.com/>

Year 6 blog – <http://wpsyearch6blog.blogspot.com/>



TUCK SHOP

MORNING BREAK - PRICE LIST



Cheesy Bagel	35p	Milk	40p
Cheese Roll	50p	Water	55p
Teacake - 1/2	35p	Flavoured Water	70p
Muffin - 1/2	35p	Fruit Juice	60p
Yoghurt	50p	Pears	35p
Crumpet	35p	Apples	35p
Toast - 1 slice	30p	Bananas	20p – 40p
Toast 1/2 slice	15p		



If you would like a copy of the newsletter in a larger print, please contact the school office

